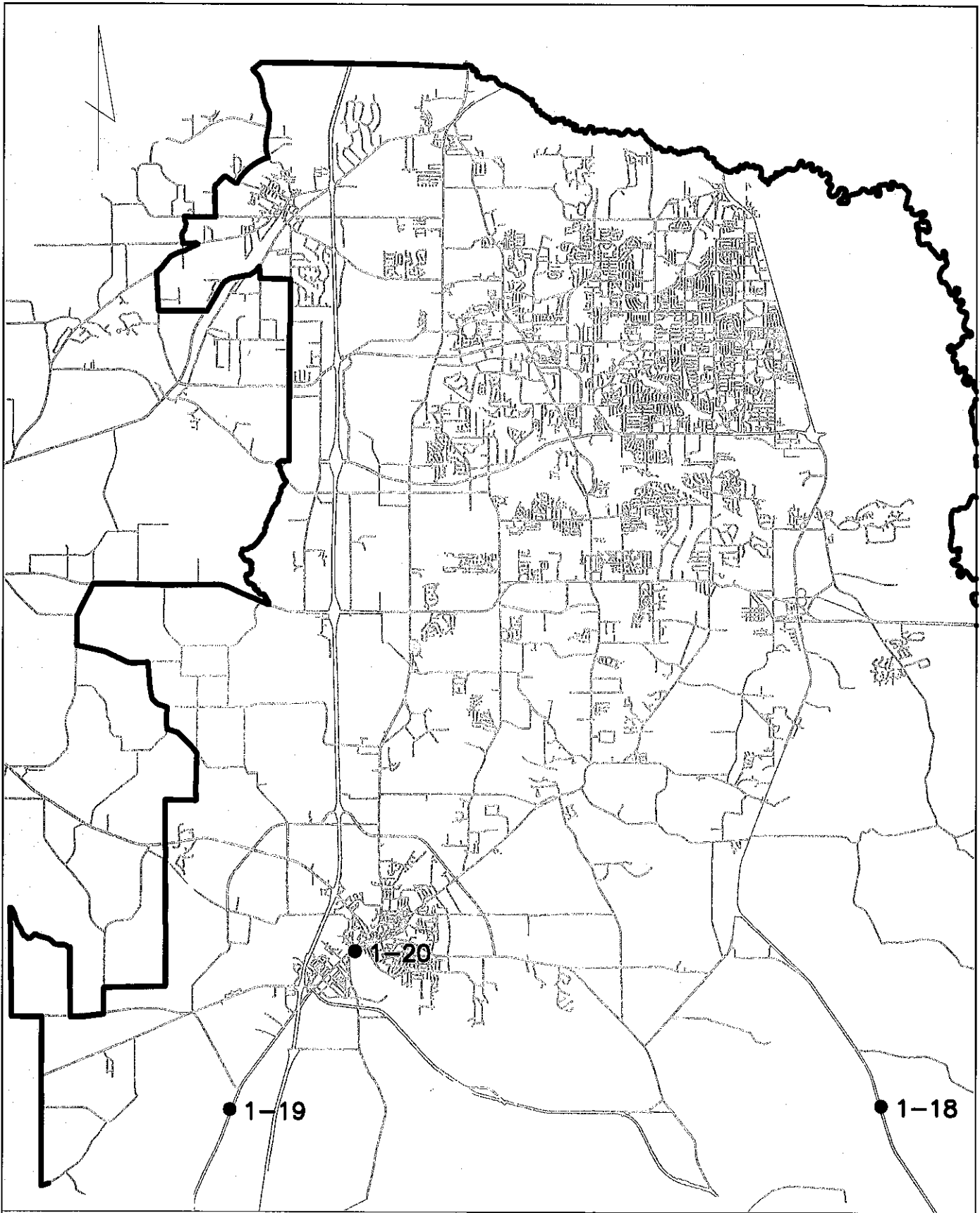


**GRAPHIC DISPLAY**

STUDY AREA MAP



LEGEND:

- ROAD PROJECT ———
- INTERSECTION or BRIDGE PROJECT ●
- PROJECT PAGE NUMBER 1-1

WARNER ROBINS AREA TRANSPORTATION STUDY

**WARNER ROBINS**  
**TOTAL EXPECTED HIGHWAY**  
**STIP FUNDS**  
**(MATCHED)**  
**FY 2018 - FY 2021**

FUND	CODE	LUMP DESCRIPTION	2018	2019	2020	2021	TOTAL
NHPP	Z001		\$ 600,000	\$ -	\$ 250,000	\$ -	\$ 850,000
STP	Z240		\$ 600,000	\$ -	\$ 250,000	\$ -	\$ 850,000
Bond	BBOND		\$ 6,161,385	\$ -	\$ -	\$ -	\$ 6,161,385
Transit	5303		\$ 89,920	\$ 89,920	\$ 89,920	\$ 89,920	\$ 359,680
Transit	5304		\$ 2,675	\$ 2,675	\$ 2,675	\$ 2,675	\$ 10,700
Transit	5307		\$ 2,057,096	\$ 2,057,096	\$ 2,057,096	\$ 2,057,096	\$ 8,228,384
NHPP	Z001	BRIDGE PAINT - INTERSTATE	\$ 412,000	\$ 412,000	\$ 412,000	\$ 412,000	\$ 1,648,000
NHPP	Z001	ROAD MAINT - NAT'L HWY	\$ 2,459,000	\$ 2,459,000	\$ 1,511,000	\$ 1,511,000	\$ 7,940,000
NHPP	Z001	ROADWAY LIGHTING	\$ 22,000	\$ 14,000	\$ 14,000	\$ 14,000	\$ 64,000
NHPP	Z001	TRAF CONTROL DEVICES - NHS	\$ 62,000	\$ 69,000	\$ 330,000	\$ 330,000	\$ 791,000
STP	L220	ENHANCEMENT	\$ 261,000	\$ 261,000	\$ 261,000	\$ 261,000	\$ 1,044,000
STP	Z240	CST MGMT	\$ 550,000	\$ 412,000	\$ 412,000	\$ 412,000	\$ 1,786,000
STP	Z240	OPERATIONS	\$ 165,000	\$ 165,000	\$ 165,000	\$ 165,000	\$ 660,000
STP	Z240	ROAD MAINT - ANY AREA	\$ 2,198,000	\$ 2,198,000	\$ 1,855,000	\$ 1,855,000	\$ 8,106,000
STP	Z240	BRIDGE PAINTING	\$ 206,000	\$ 206,000	\$ 206,000	\$ 206,000	\$ 824,000
STP	Z240	LOW IMPACT BRIDGES	\$ 357,000	\$ 357,000	\$ 357,000	\$ 357,000	\$ 1,428,000
STP	Z240	TRAF CONTROL DEVICES	\$ 419,000	\$ 412,000	\$ 82,000	\$ 82,000	\$ 995,000
STP	Z240	RW PROTECTIVE BUY	\$ 21,000	\$ 21,000	\$ 21,000	\$ 21,000	\$ 84,000
STP	Z240	WETLAND MITIGATION	\$ 16,000	\$ 16,000	\$ 16,000	\$ 16,000	\$ 64,000
Trails	Z940	RECREATIONAL TRAILS	\$ 17,000	\$ 17,000	\$ 17,000	\$ 17,000	\$ 68,000
HSIP	ZS30	SAFETY	\$ 1,305,000	\$ 1,374,000	\$ 1,374,000	\$ 1,374,000	\$ 5,427,000
HSIP	ZS40	RRX HAZARD ELIM	\$ 69,000	\$ 69,000	\$ 69,000	\$ 69,000	\$ 276,000
HSIP	ZS50	RRX PROTECTION DEV	\$ 55,000	\$ 55,000	\$ 55,000	\$ 55,000	\$ 220,000
<b>TOTAL</b>			<b>\$ 18,105,076</b>	<b>\$ 10,666,691</b>	<b>\$ 9,806,691</b>	<b>\$ 9,306,691</b>	<b>\$ 47,885,149</b>

**TABLE OF CONTENTS**

	<u>PAGE</u>
<b>SECTION 1: FY 2018-2021 TRANSPORTATION IMPROVEMENT PROJECTS</b>	
TIP Financial Plan	Pages i-iii
Lump Sum Interstate Bridge Painting	1-1
Lump Sum NHS Road Maintenance	1-2
Lump Sum Roadway Lighting	1-3
Lump Sum NHS Traffic Control Devices	1-4
Lump Sum Safety	1-5
Lump Sum Enhancement	1-6
Lump Sum Road Maintenance	1-7
Lump Sum Bridge Painting	1-8
Lump Sum Traffic Control Devices	1-9
Lump Sum Wetland Mitigation	1-10
Lump Sum RW Protective Buy	1-11
Lump Sum Construction Management	1-12
Lump Sum Operations	1-13
Lump Sum Low Impact Bridges	1-14
Lump Sum Railroad Protection Device	1-15
Lump Sum Railroad Hazard Elimination	1-16
Lump Sum Recreational Trails	1-17
SR-247 @ Big Indian Creek & Overflow 9 miles SE of Perry	1-18
SR-7 @ Flat Creek 3.5 miles SW of Perry	1-19
SR-7/SR-127/US-41 @ Big Indian Creek in Perry	1-20
TIP Summary Sheet	1-21
<b>TRANSIT PROGRAMS-</b>	
Elderly and Disabled Transit	1-22
Rural Public Transit	1-23/1-24
<b>MONITORING OF PROGRAM PROGRESS-</b>	
Project Summaries Table	1-25/1-26

**APPENDIX A-**

Public Participation Documentation

**APPENDIX B-**

TIP Resolution

**APPENDIX C-**

Policy Committee Members  
Technical Coordinating Committee Members  
Citizens Advisory Committee Members

**APPENDIX D-**

State Transportation Improvement Program (STIP)  
Transportation Improvement Program (TIP) Amendment Process

**APPENDIX E-**

Certification Of The Warner Robins Area Transportation Study

TRANSPORTATION IMPROVEMENT PROGRAM  
ANTICIPATED FEDERAL EXPENDITURES FINANCIAL PLAN  
(FY 2018 -2021)

NATIONAL HIGHWAY PERFORMANCE PROGRAM (NHPP)  
IN (000's)

NHPP (Z001)

PI#	PROJECT DESCRIPTION	TIP PAGE #	TIP															
			FY 2018				FY 2019				FY 2020				FY 2021			
			PE	RW	UTL	CST	PE	RW	UTL	CST	PE	RW	UTL	CST	PE	RW	UTL	CST
LUMP SUM	LUMP SUM ROAD MAINT-NATL HWY	1-2				2459				2459				1511				1511
LUMP SUM	LUMP SUM BRIDGE PAINT-INTERSTATE	1-1				412				412				412				412
LUMP SUM	LUMP SUM ROADWAY LIGHTING	1-3				22				14				14				14
LUMP SUM	LUMP SUM TRAFFIC CONTROL DEVICES-NHS	1-4				62				65				330				330
001553	SR-7/SR-127/US-41 @ BIG INDIAN CREEK IN PERRY	1-20	600									250						
SUBTOTAL Z001 COSTS			600	0	0	2955	0	0	0	2954	0	250	0	2267	0	0	0	2267
TOTAL Z001 COSTS						3555				2954				2517				2267
AVAILABLE Z001 FUNDS						3555				2954				2517				2267

BONDS  
IN (000's)

Bond (BBOND)

PI#	PROJECT DESCRIPTION	TIP PAGE #	TIP															
			FY 2018				FY 2019				FY 2020				FY 2021			
			PE	RW	UTL	CST	PE	RW	UTL	CST	PE	RW	UTL	CST	PE	RW	UTL	CST
0011685	SR-247 @BIG INDIAN CREEK & OVERFLOW 9 MI SE OF PERRY	1-18				6161				0				0				0
SUBTOTAL BBOND COSTS			0	0	0	6161	0	0	0	0	0	0	0	0	0	0	0	0
TOTAL BBOND COSTS						6161				0				0				0
AVAILABLE BBOND FUNDS						6161				0				0				0

SURFACE TRANSPORTATION PROGRAM (STP)  
IN (000's)

STATE FLEXIBLE FUNDS (Z240)

PI#	PROJECT DESCRIPTION	TIP PAGE #	TIP															
			FY 2018				FY 2019				FY 2020				FY 2021			
			PE	RW	UTL	CST	PE	RW	UTL	CST	PE	RW	UTL	CST	PE	RW	UTL	CST
LUMP SUM	LUMP SUM ROAD MAINT-ANY AREA	1-7				2198				2198				1855				1855
LUMP SUM	LUMP SUM BRIDGE PAINTING	1-8				206				206				206				206
LUMP SUM	LUMP SUM TRAF CONTROL DEVICES	1-9				412				412				82				82
LUMP SUM	LUMP SUM WETLAND MITIGATION	1-10				16				16				16				16
LUMP SUM	LUMP SUM CST MGMT	1-12				550				412				412				412
LUMP SUM	LUMP SUM RW PROTECTIVE BUY	1-11				21				21				21				21
LUMP SUM	LUMP SUM LOW IMPACT BRIDGES	1-14				357				357				357				357
LUMP SUM	LUMP SUM OPERATIONS	1-13				165				165				165				165
001552	SR-7 @ FLAT CREEK 3.5 MI SW OF PERRY	1-19	600									250						
SUBTOTAL Z240 COSTS			600	0	0	3932	0	0	0	3787	0	250	0	3114	0	0	0	3114
TOTAL Z240 COSTS						4532				3787				3364				3114
AVAILABLE Z240 FUNDS						4532				3787				3364				3114

ENHANCEMENT (L220)

PI#	PROJECT DESCRIPTION	TIP PAGE #	TIP															
			FY 2018				FY 2019				FY 2020				FY 2021			
			PE	RW	UTL	CST	PE	RW	UTL	CST	PE	RW	UTL	CST	PE	RW	UTL	CST
LUMP SUM	LUMP SUM ENHANCEMENT	1-6				261				261				261				261
SUBTOTAL L220 COSTS			0	0	0	261	0	0	0	261	0	0	0	261	0	0	0	261
TOTAL L220 COSTS						261				261				261				261
AVAILABLE L220 FUNDS						261				261				261				261

RECREATIONAL TRAILS PROGRAM (RTP)  
IN (000's)

TRAILS (Z940)

P#	PROJECT DESCRIPTION	TIP PAGE #	TIP															
			FY 2018				FY 2019				FY 2020				FY 2021			
			PE	RW	UTL	CST	PE	RW	UTL	CST	PE	RW	UTL	CST	PE	RW	UTL	CST
LUMP SUM	LUMP SUM RECREATIONAL TRAILS	1-17				17				17				17				17
	SUBTOTAL Z940 COSTS		0	0	0	17	0	0	0	17	0	0	0	17	0	0	0	17
	TOTAL Z940 COSTS					17				17				17				17
	AVAILABLE Z940 FUNDS					17				17				17				17

HIGHWAY SAFETY IMPROVEMENT PROGRAM (HSIP)  
IN (000's)

FAST ACT (ZS30)

P#	PROJECT DESCRIPTION	TIP PAGE #	TIP															
			FY 2018				FY 2019				FY 2020				FY 2021			
			PE	RW	UTL	CST	PE	RW	UTL	CST	PE	RW	UTL	CST	PE	RW	UTL	CST
LUMP SUM	LUMP SUM SAFETY	1-5				1305				1374				1374				1374
	SUBTOTAL ZS30 COSTS		0	0	0	1305	0	0	0	1374	0	0	0	1374	0	0	0	1374
	TOTAL ZS30 COSTS					1305				1374				1374				1374
	AVAILABLE ZS30 FUNDS					1305				1374				1374				1374

RAILWAY-HIGHWAY-- PROTECTIVE DEVICES (ZS50)

P#	PROJECT DESCRIPTION	TIP PAGE #	TIP															
			FY 2018				FY 2019				FY 2020				FY 2021			
			PE	RW	UTL	CST	PE	RW	UTL	CST	PE	RW	UTL	CST	PE	RW	UTL	CST
LUMP SUM	LUMP SUM RRX PROTECTION DEV	1-15				55				55				55				55
	SUBTOTAL ZS50 COSTS		0	0	0	55	0	0	0	55	0	0	0	55	0	0	0	55
	TOTAL ZS50 COSTS					55				55				55				55
	AVAILABLE ZS50 FUNDS					55				55				55				55

RAILWAY-HIGHWAY--HAZARD ELIMINATION (ZS40)

P#	PROJECT DESCRIPTION	TIP PAGE #	TIP															
			FY 2018				FY 2019				FY 2020				FY 2021			
			PE	RW	UTL	CST	PE	RW	UTL	CST	PE	RW	UTL	CST	PE	RW	UTL	CST
LUMP SUM	LUMP SUM RRX HAZARD ELIM	1-16				69				69				69				69
	SUBTOTAL ZS40 COSTS		0	0	0	69	0	0	0	69	0	0	0	69	0	0	0	69
	TOTAL ZS40 COSTS					69				69				69				69
	AVAILABLE ZS40 FUNDS					69				69				69				69

TRANSPORTATION IMPROVEMENT PROGRAM  
TRANSIT FINANCIAL PLAN  
(FY2018-FY2021)

TIP PAGE #	FUNDING SOURCE	TIP			
		FY 18	FY 19	FY 20	FY 21
	<b>FEDERAL</b>				
1-22	Elderly and Disabled	\$40,853	\$42,896	\$45,040	\$45,266
	FEDERAL COSTS	\$32,682	\$34,317	\$36,032	\$36,213
	STATE COSTS	\$8,171	\$8,579	\$9,008	\$9,053
1-23	Rural Public Transit Capital	\$49,000	\$0	\$0	\$0
	FEDERAL COSTS	\$39,200	\$0	\$0	\$0
	STATE COSTS	\$4,900	\$0	\$0	\$0
	LOCAL COSTS	\$4,900	\$0	\$0	\$0
1-24	Rural Public Transit Operating	\$141,750	\$0	\$0	\$0
	FEDERAL COSTS	\$70,875	\$0	\$0	\$0
	LOCAL COSTS	\$70,875	\$0	\$0	\$0
	<b>TOTAL FEDERAL COSTS</b>	<b>\$142,757</b>	<b>\$34,317</b>	<b>\$36,032</b>	<b>\$36,213</b>
	<b>TOTAL STATE COSTS</b>	<b>\$13,071</b>	<b>\$8,579</b>	<b>\$9,008</b>	<b>\$9,053</b>
	<b>TOTAL LOCAL COSTS</b>	<b>\$75,775</b>	<b>\$0</b>	<b>\$0</b>	<b>\$0</b>